

DRC DANISH REFUGEE COUNCIL

ANNUAL BUDGET IN 2022

6 173 406 EUR

7 PROJECTS IMPLEMENTED IN 2022



Economic Recovery

Humanitarian Disarmament & Peacebuilding

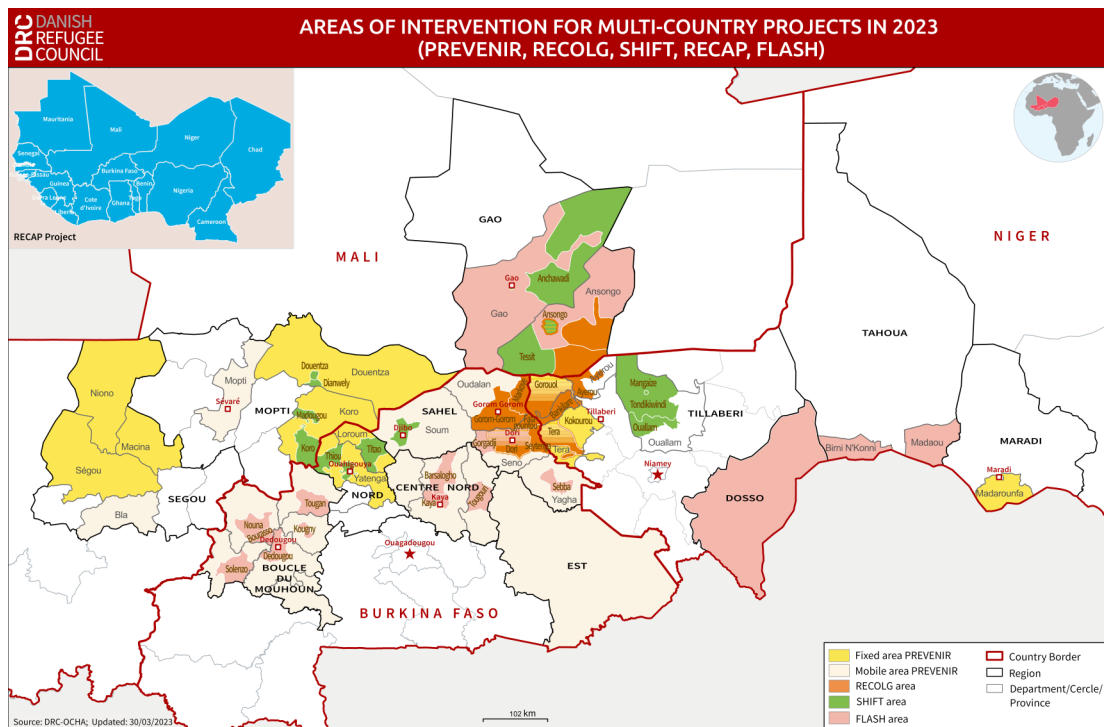
Protection

AREAS OF INTERVENTION

Burkina Faso, Mali, Niger & 15 West and Central African countries

DRC West Africa Multi-Country Operations and Grants Unit was set up in February **2021** and oversees the implementation of **multi-country projects** (also known as regional projects).

Since 2012, the **3-border zone** (Burkina Faso, Mali and Niger) or **Liptako-Gourma region** has been facing a **complex crisis** that aggravates the **vulnerability** of its already disabled populations due to the low level of development. Local conflicts, violent extremism and organized crime are increasing the insecurity in the region, while the victims are overwhelmingly the local population. This local population, already under pressure due to **climatic conditions**, the **scarcity of productive resources** and the **deficiency of the state** in rural areas, is forced to leave their homes to flee the violence. Thus, the number of **internally displaced people** continues to grow and more than **2.5 million IDPs** were registered at the beginning of 2023 and this figure continues to grow.



THEY SUPPORT US





SHIFT: SUPPORTING HOST COMMUNITIES AND IDPs TO FACILITATE SUSTAINABLE TRANSITION TOWARDS INCLUSIVE SOLUTIONS



Burkina Faso (Northern and Sahel regions), Mali (Gao and Mopti regions) and Niger (Tillabéri and region)



39 000 000 DKK (5 236 600 EUR)



01/01/2021 to 30/10/2023



DRC (lead), AFDR, AFJ/BF, AREN, AVN, CRUS, RBM, TASSAGHT
Synergies: Poverty Alleviation Coalition, World Bank



1 232 families, benefitting to more than **9 000 persons**

Extremely poor households among displaced persons (70% of beneficiaries) and host communities (30% of beneficiaries), youth between 15 and 24 years old (70% of beneficiaries) with a gender balance (50% of beneficiaries will be women).



Economic
Recovery



Humanitarian
Disarmament &
Peacebuilding



Protection

General objective

Promote long-term inclusive solutions for displaced populations and host communities in Liptako-Gourma through the humanitarian-development-peace nexus.

Context

In Liptako Gourma, deteriorating security, food insecurity and lack of livelihoods, exacerbated by climate change and poor governance, continue to lead to massive displacement of populations. The situation has become a vicious circle as displacement adds pressure to existing vulnerabilities and limited access to resources, thus creating tensions between host and displaced populations, adding to inter-communal ethnic clashes and increasing humanitarian and development needs. Social norms and power differences in the Sahel region are still conditioned by age and gender, which excludes people aged 15 to 24 from social, economic and public affairs, and generates intra-community tensions. In addition, women face additional restrictions, as their lives are still marked by patriarchal norms that marginalize them, hinder their potential and expose them to further violence.



Cash-emergency responses in Niger: Purchase of food by a beneficiary at a trader, August 2021.

Project description

This 30-month integrated project aims to facilitate the transition from short-term humanitarian interventions to long-term inclusive solutions for displaced populations, addressing situations of protracted displacement in Liptako-Gourma. The project rolls out the graduation approach in displacement areas and is integrating economic recovery, protection & participation, social cohesion. It enables displaced persons and returnees to provide for themselves and their families, increase their socio-economic resilience and meet their needs for protection and essential services in a sustainable and dignified manner. The project works also on social cohesion and advocacy, which are crucial to avoid new fractures, as the perceived or actual lack of access to resources and services is increasingly a source of division between displaced people and host communities. The project aligns with the commitments made at the Global Refugee Forum in 2019 by DANIDA and seven Danish NGO's to "Strengthen Youth Agency, Empowerment and Solution Pathways in Displacement".



Foreign, Commonwealth & Development Office



FLASH

FIRST LOCAL EMERGENCY RESPONSE IN SAHEL HARD TO REACH HOT SPOTS (THE LOCAL RRM)



Burkina Faso, Mali, Niger in hard-to-reach areas in Sahel hot spots of Liptako Gourma and at the SW Niger in Maradi region.



DRC (lead), A2N, ASMADE, UAVES, AMSODE, AREN, ADKOUL



01/06/2022 to 31/03/2025



27 300 direct beneficiaries estimated



2 894 535 GBP (soit 3 271 611 Euros)



Humanitarian Disarmament & Peacebuilding

General objective

Emergency needs of the most vulnerable in hard-to-reach areas with acute humanitarian need are met more effectively and efficiently through strengthened local first responders in the Sahel region .

Context

The security situation and heavy militarisation in the Sahel region compel humanitarian actors, in particular INGOs, to remain extremely cautious regarding their positioning as independent and neutral actors. Humanitarian actors have to negotiate all the time and for lengthy periods in order to reach those in need. In other locations, it is impossible to gain access, leaving communities without essential assistance and protection. On the contrary, national and/or local CSOs have access to hard to reach Sahel hot spots but this also come with security challenges. Local actors can also face challenges in engaging in impartial and neutral humanitarian response activities. Local CSOs may be linked with particular parties to the conflict (whether intentionally or unintentionally). These links can have serious implications for their security and impact the perception of any international NGO that may be in partnership with them. These perceptions can furthermore result in security challenges for the international partner.

Project description

The project intends to pilot a local RRM led by national and/or local actors to respond to small and multiple displacements. This project will focus on strengthening capacities of well-established and reputed local responders to deliver life-saving assistance when and where crises strike, filling capacity gaps in emergency preparedness and response while providing learning and good practices. The inclusive approach to partnership and coordination of the DRC localisation project in hard-to-reach Sahel hot spots will directly contribute to SRF strategy to deliver high quality VfM in Sahel hot spots.

The project will contribute to the implementation of the localisation agenda in Sahel. Additionally, the learning of this project will inform the revision of the SRF strategy and framework to ensure national and local actors can play a more powerful role in the SRF governance structure and can directly access funds.